

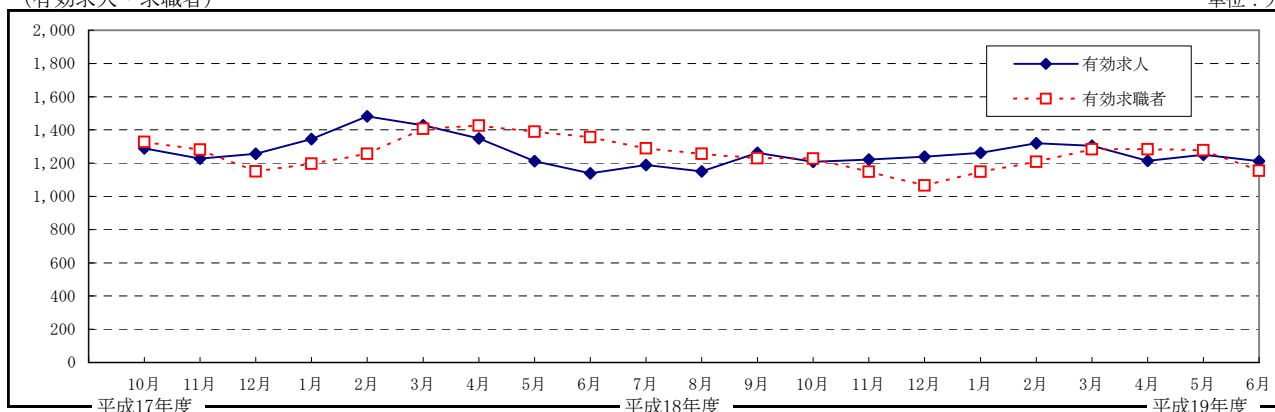
# 参 考 資 料 1

( 月 次 推 移 )

## ○労働需給状況

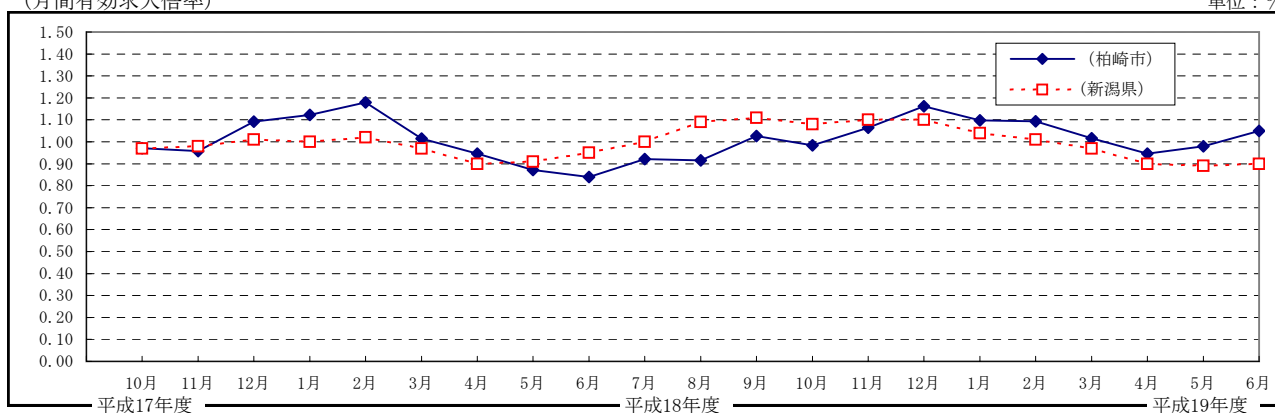
(有効求人・求職者)

単位：人



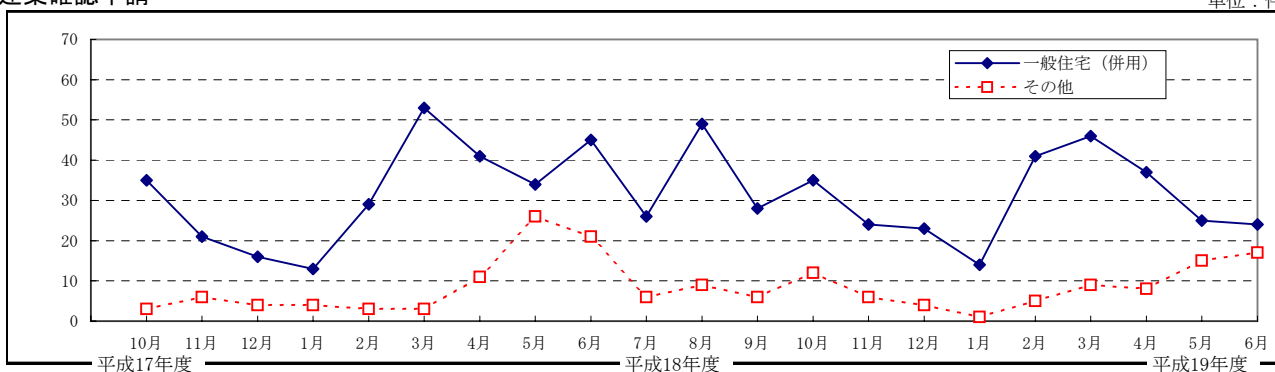
(月間有効求人倍率)

単位：%

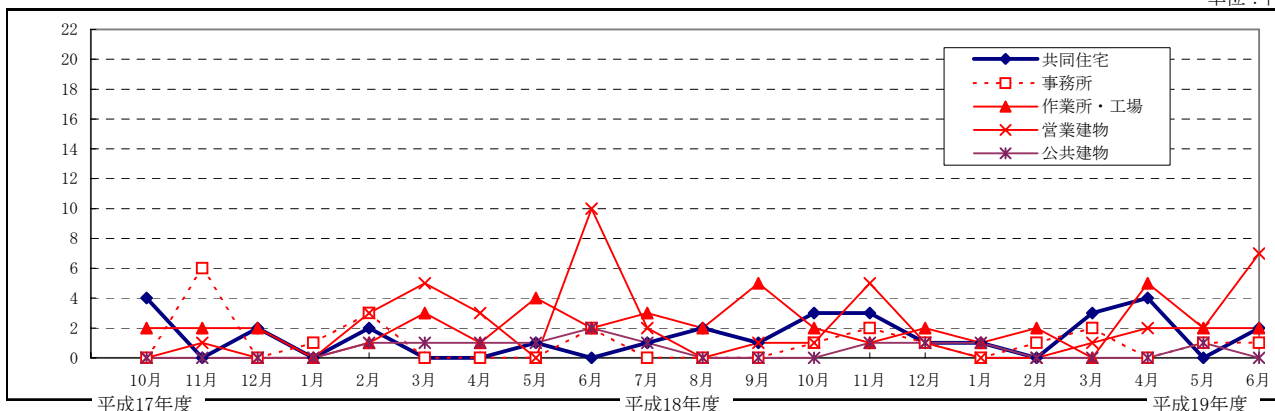


## ○建築確認申請

単位：件



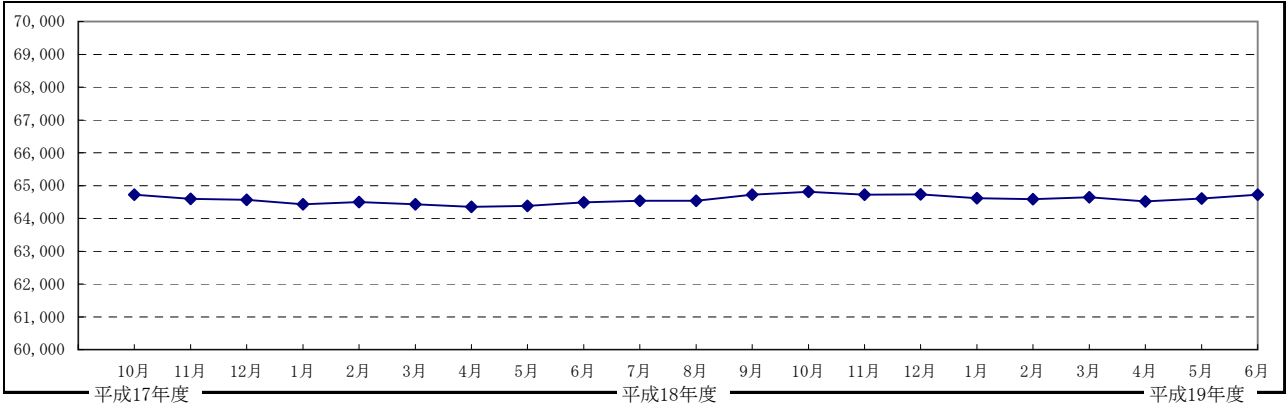
単位：件



## ○電力使用量

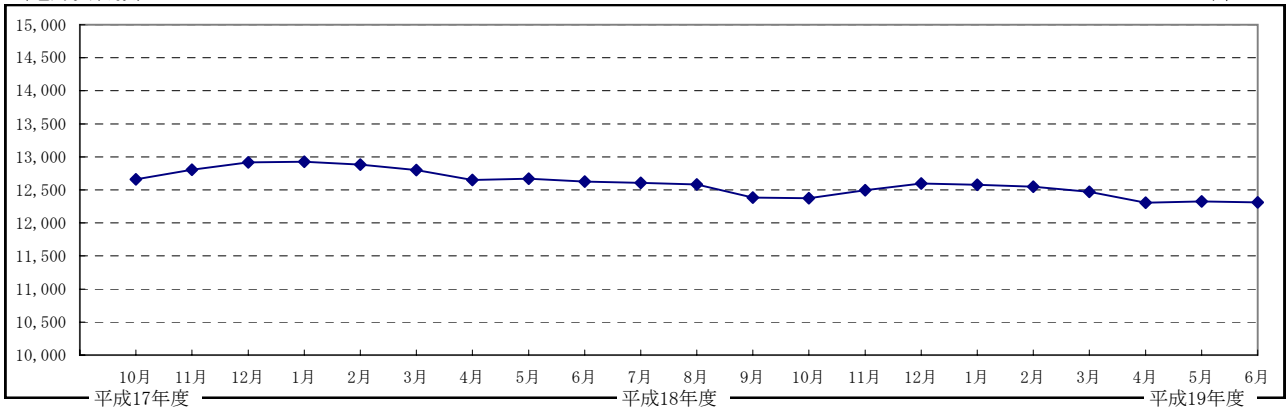
(電灯契約数)

単位：口



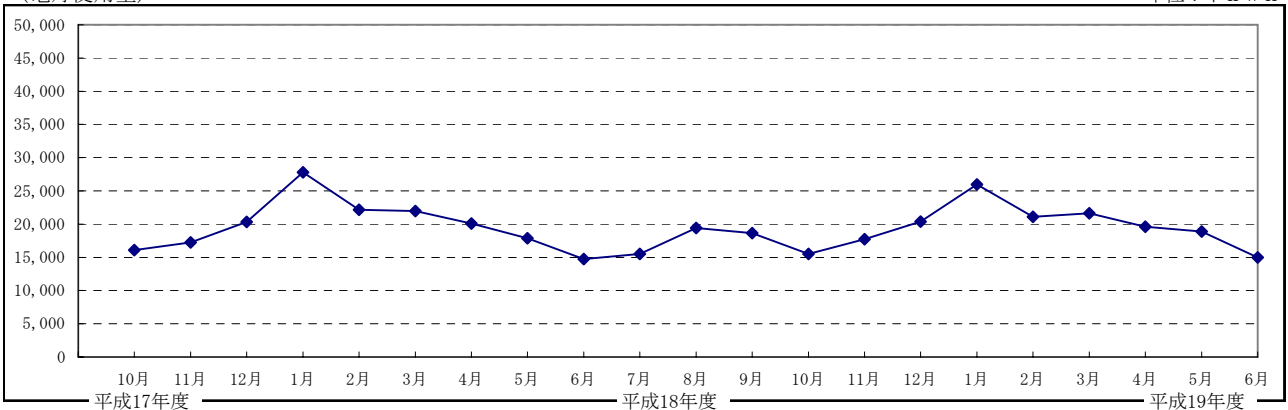
(電力契約数)

単位：口



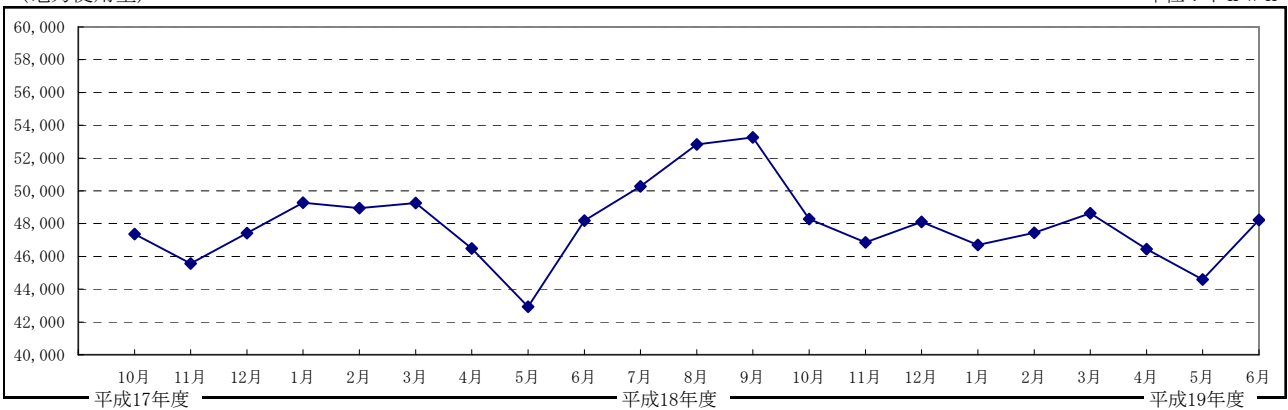
(電灯使用量)

単位：千kwh



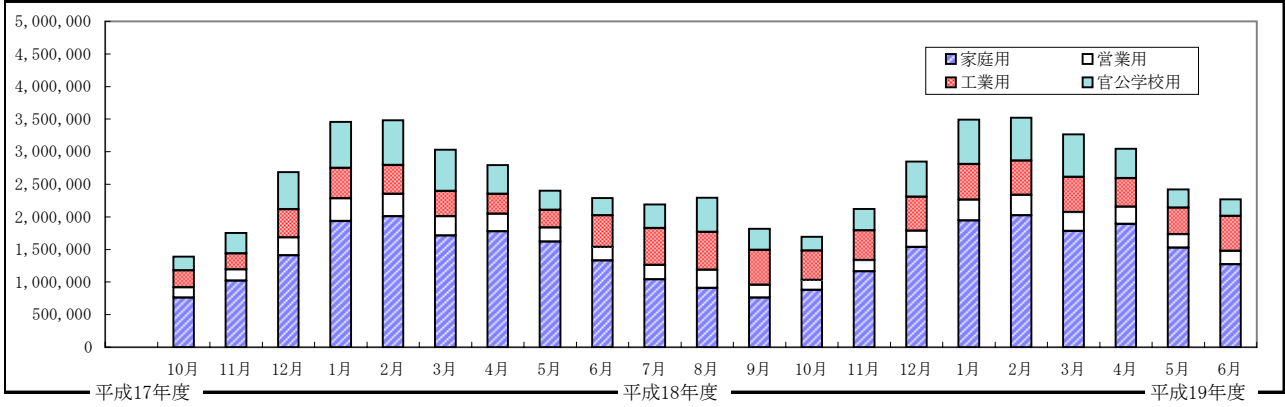
(電力使用量)

単位：千kwh



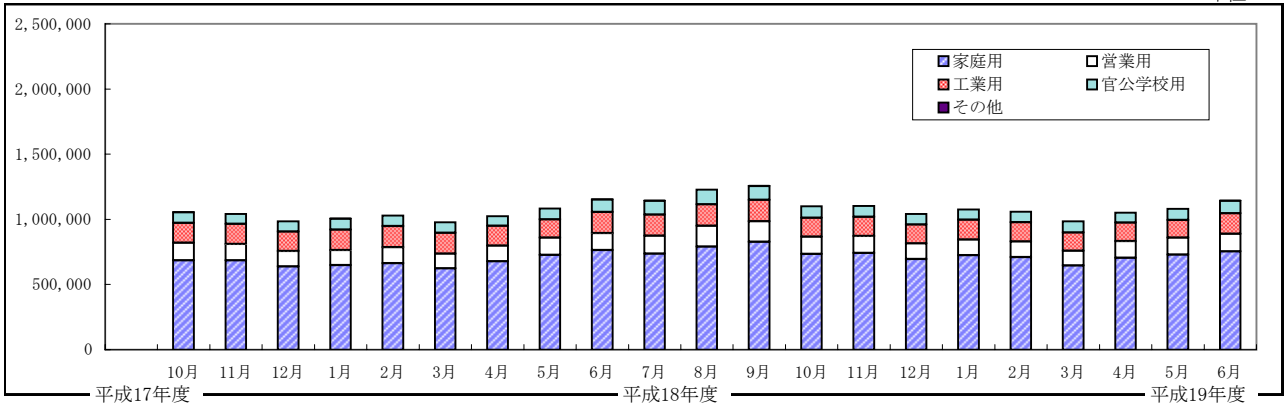
○ガス供給量

単位:m<sup>3</sup>



○水道給水量

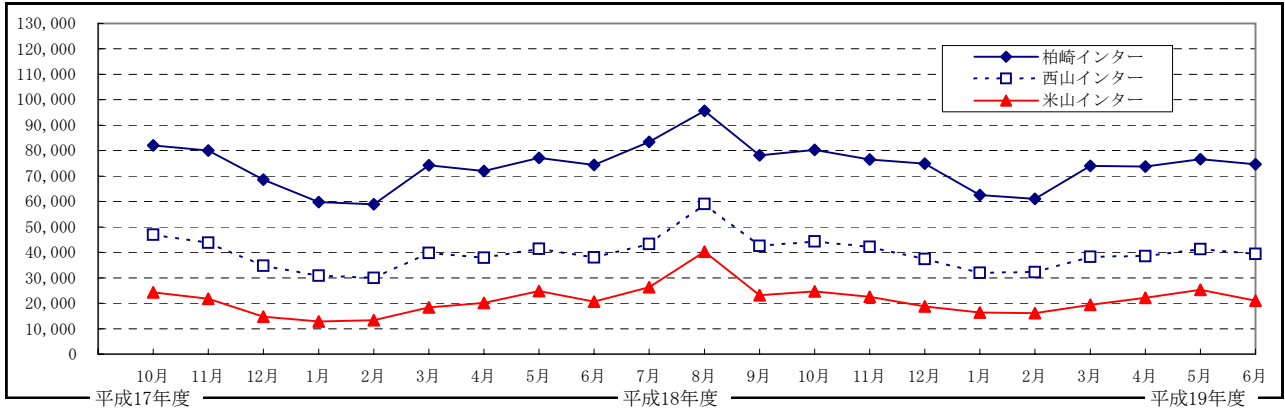
単位:m<sup>3</sup>



○北陸自動車道利用状況

(入口)

単位:台



(出口)

単位:台

