

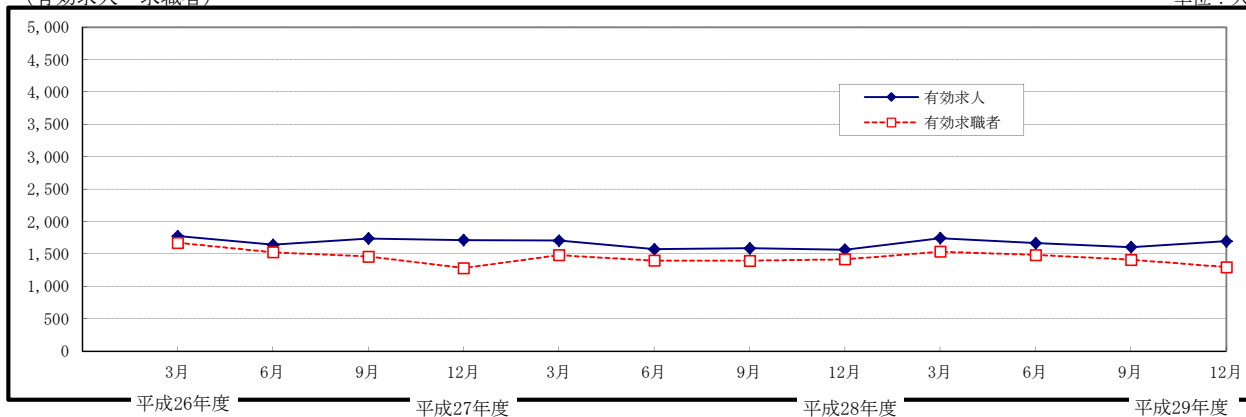
## 参 考 資 料 2

( 四 半 期 推 移 )

### ○労働需給状況

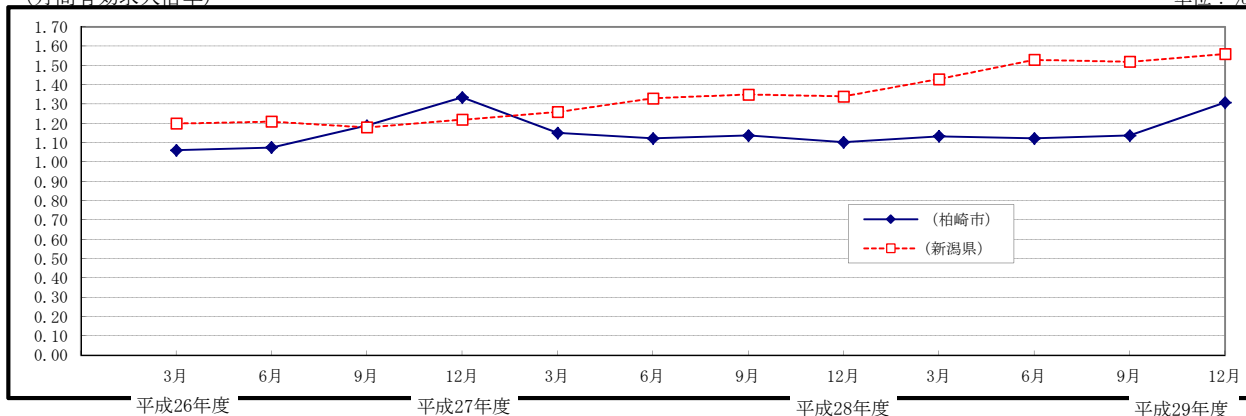
(有効求人・求職者)

単位：人



(月間有効求人倍率)

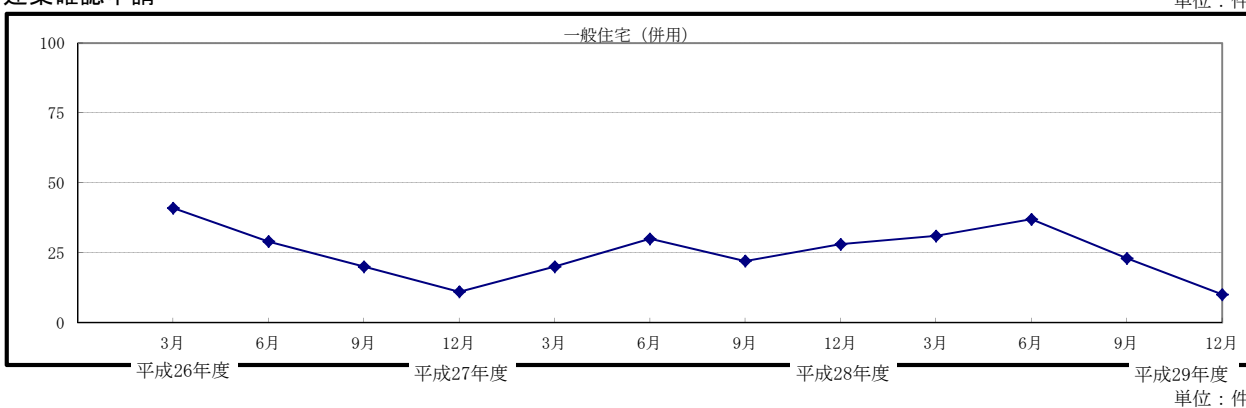
単位：%



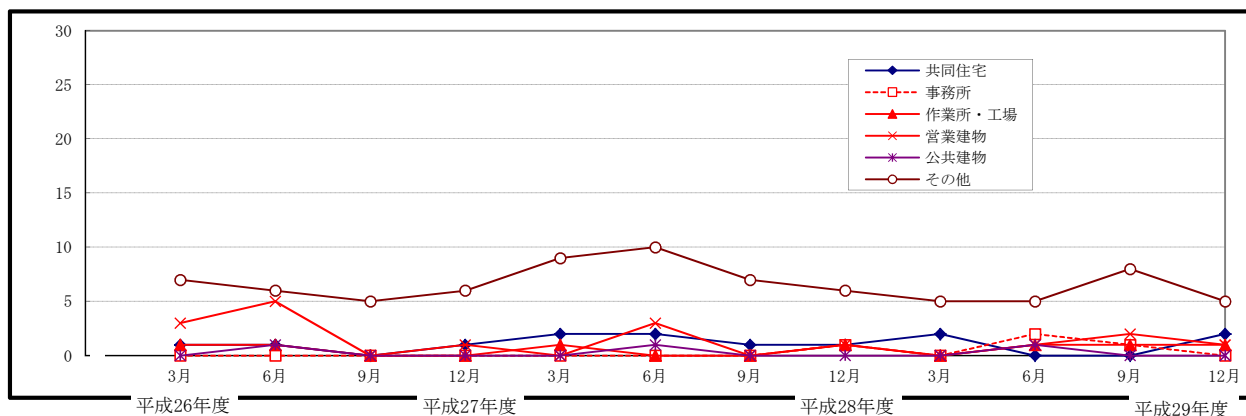
0

### ○建築確認申請

単位：件

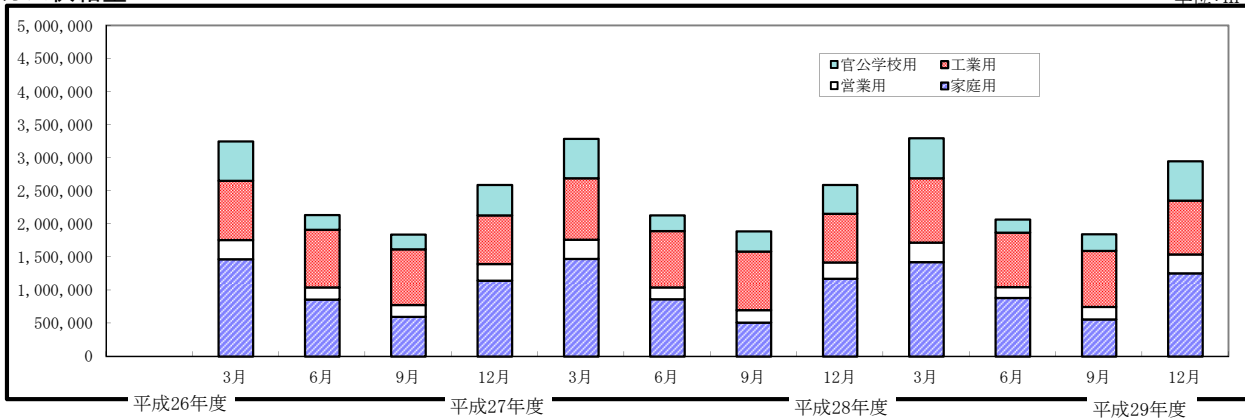


単位：件



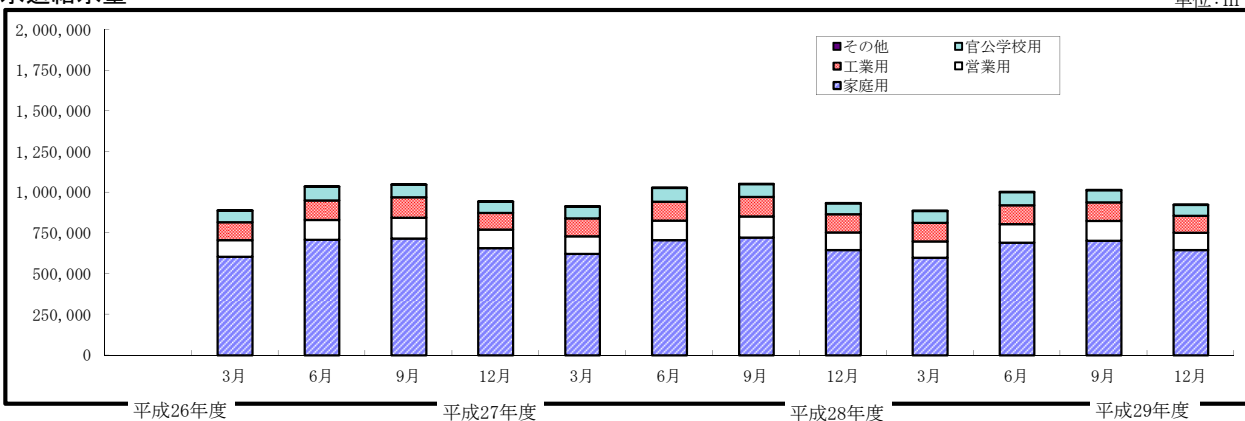
○ガス供給量

単位:m<sup>3</sup>



○水道給水量

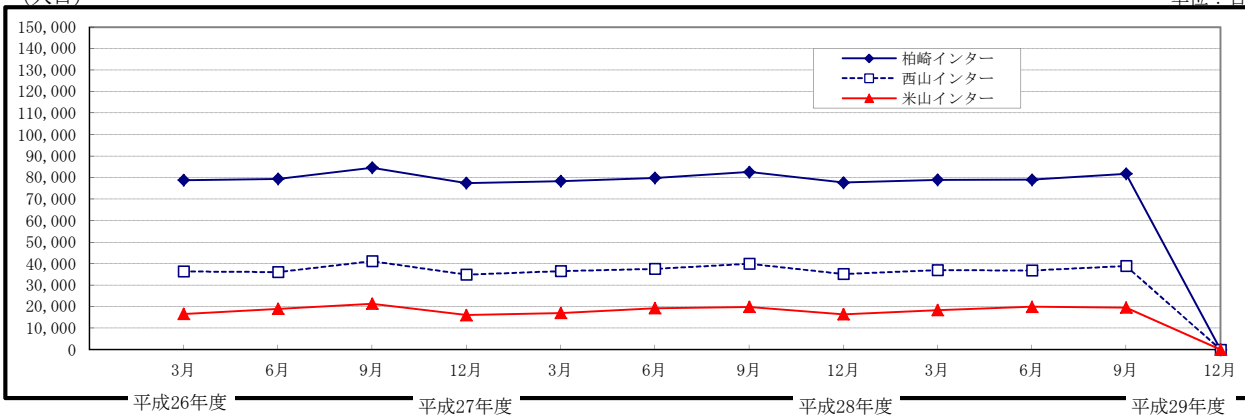
単位:m<sup>3</sup>



○北陸自動車道利用状況

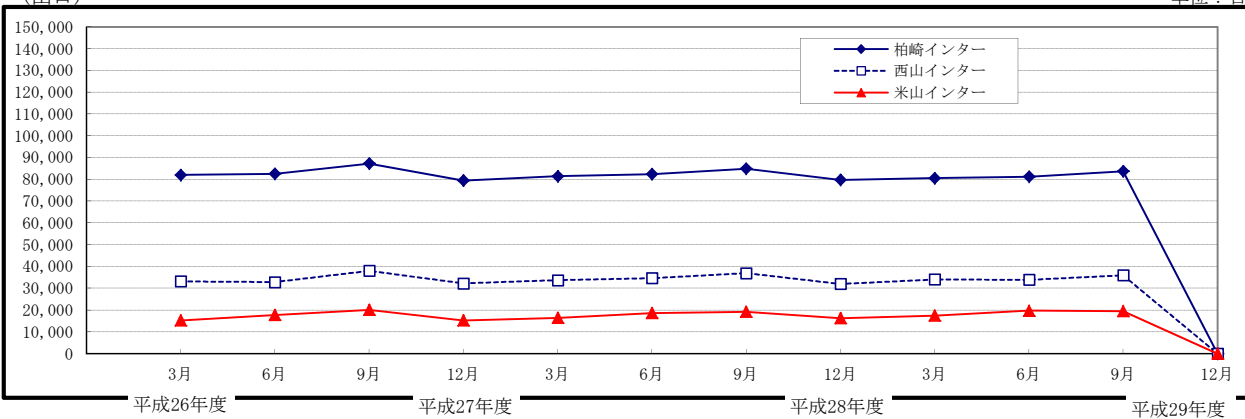
(入口)

単位:台



(出口)

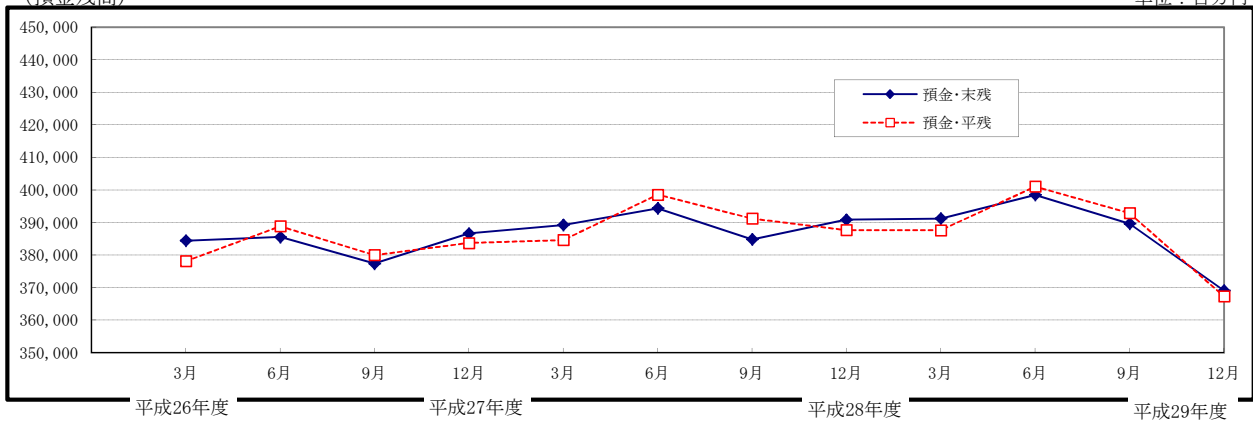
単位:台



○市内金融機関預貸金残高

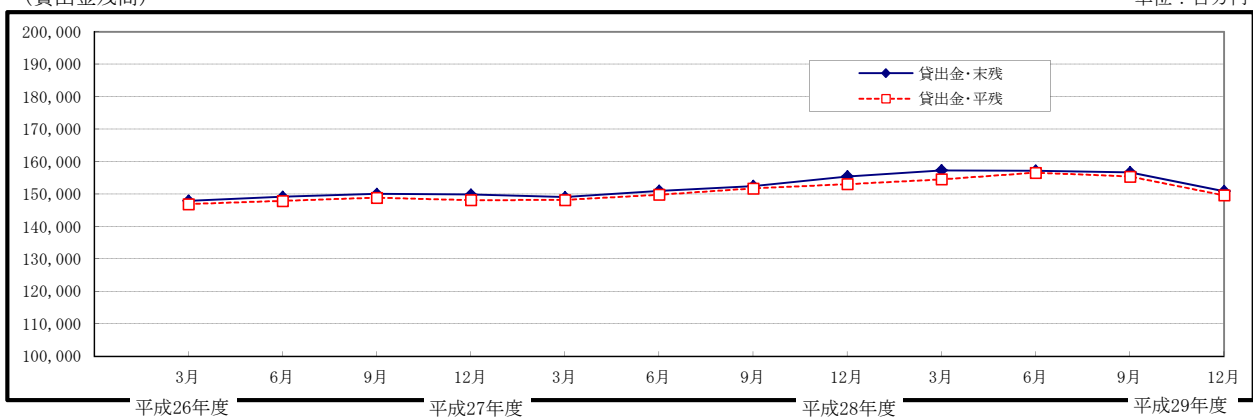
(預金残高)

単位：百万円



(貸出金残高)

単位：百万円



○手形交換高

単位：枚、百万円

